



PO!PARIS

D E S I G N

FELT

2025 COLLECTION

Lighting
&
Decorations

paris@po-paris.com
www.po-paris.com
IG : po.paris.design

TABLE OF CONTENTS

PENDANT LAMPS	page 06
CERAMIC ACCESSORIES	page 11
WALL LAMP	page 14
MOBILES	page 19
LAMPS ON STAND	page 27





FELT

Felt hats, “qelesh ” are still part of the traditional way of life in the rural Albania.

Each town and country has its own shape, all made in the same way as they have been for centuries.

The wool from sheep of the impervious lands of the east is processed through a number of complex and laborious operations, carded at first into a light cloud, then worked into a thin and resistant sheet formed around a wooden shape through a very long felting process with warm water and soap.



THE «Q.» LAMPS

Our lamps are thin yet firm thanks to the high quality of the wool from the late summer shearing and the long felting process, letting the light filter through the wool, creating a warm and soothing atmosphere. Our producer works in the same small workshop where he learnt from his father, following a family tradition passed on through many generations.

By using the traditional hat making technique to make a lamp, adding new shapes and sizes, *Po! Paris* is contributing to the survival of a noble and respected profession by helping it adapt to the irresistible advance of modern life style.



«Q.» LAMPS WIRING VARIATIONS

Standard wiring :

1. ceiling lamps (left) : 300 cm linen textile 2 way cable natural colour with E27 socket and canopy, both in porcelaine, with connectors.

2. portable lamp (right) : 290 cm linen colour textile cable E27 porcelaine socket without earth connexion, switch and C type plug.

Specific cable length, light bulbs and adaptors can be provided on request.

Felt does not burn without a flame but excessive heat can create a brown stain.

We advise maximum 15 watts and filament LED bulbs.



DEEP «Q.» LAMP VARIATIONS

The deep lamp comes in four sizes.

Designer : John Felici

Material : Albanian felt wool

Available with a black or a natural color cable

Small deep lamp

Dimensions : 15 (Ø) x 18 cm

Code : M09QLSO10

Deep lamp

Dimensions : 15 (Ø) x 22 cm

Code : M09QLSO31

Large deep lamp

Dimensions : 20 (Ø) x 26 cm

Code : M09QLSO51

Giant deep lamp

Dimensions : 28 (Ø) x 30 cm

Code : M09QLSO61

Care and Maintenance : Vacuum



ROUND «Q.» PENDANT LAMPS

We created two different sizes for this model of round lamp.

Designer : John Felici
Material : Albanian felt wool

Available with a black or a natural color cable

Round
Dimensions : 15 (Ø) x 18 cm
Code : M09QLS011

Large round
Dimensions : 30 (Ø) x 25 cm
Code : M09QLS041

Care and Maintenance : Vacuum



CYLINDRICAL «Q.» PENDANT LAMPS

Our first felt lamp, inspired by Tirana's traditional hat.

Designer : John Felici

Material : Albanian felt wool

Available with a black or a natural color cable.

Cylindrical

Dimensions : 18 (Ø) x 15 cm

Code : M09QLSO21

Care and Maintenance : Vacuum



AURELIE'S «Q.» PENDANT LAMPS

These three lamps are embroidered with patterns by Aurélie Mathigot.

Designer : Aurélie Mathigot
Material : Albanian felt wool

Cylindrical Aurélie pendant lamp
Dimensions : 18 (Ø) x 15 cm
Code : M09QLSA2

Deep Aurélie pendant lamp (zig zag or rhombus)
Dimensions : 20 (Ø) 26 cm
Code : M09QLSA5

Care and Maintenance : Vacuum



FRINGE PENDANT LAMPS (GIANT)

Joining our felt collection in 2020, those fringe lamps often named « jellyfish » will give a warm and cozy feeling to any space.

The length of the fringe can be shortened if necessary and the shape of the lamp can either be one of our giant lamps or a round one.

Designer : John Felici

Material : Albanian felt wool and synthetic

The fringe can be in white or in gold.

Fringe lamp with giant deep lamp

Dimensions : 112x20 cm

Code : M09QLSO62 (white or gold)

Care and Maintenance : Vacuum



NATHALIE'S SEABED GARDEN

Inspired by the seabed and vegetal world, Nathalie Lété imagined a collection of accessories for the «Q.» lamp range. Each piece is made in our workshop in Paris. Glazing by Claire Hecquet-Chaut, ceramic jewelry designer.

Code : T09NTL5





MARINE GARDEN

Glazed faience decoration. Sold in sets and available in 5 colors.

Designers : Nathalie Lété / Claire Hecquet-Chaut
Material : ceramic

Code :
-T09NTL5-5 (1 canopy, 3 stones et 1 calyx)
-T09NTL5-12 (10 stones, 2 calyxes)

Canopies :
Code : T09NTL5 (6, 12 or 16 petals)

Colors : blue, grey, yellow, rose, green

Care and Maintenance : Clean with a humide or dry cloth



Support Nathalie Lété



Support Po



Support Nathalie Lété



Support Nathalie Lété

WALL «Q.» LAMP SUPPORT

These wall lamps have a canopy support made in ceramic. The example lamp on the picture has been made with a 16 petals canopy, it's possible to pick a different color or to go with a minimalist ceramic support « Po ».

It is also possible to choose a different lamp which leaves you with a lot of different possibilities.

Designers : John Felici & Nathalie Lété

Material : ceramic

Support Nathalie Lété

Dimensions : 12 Ø x10h cm

Code : T09NTL5 - Support Rosace

Colors : blue, yellow, rose, turquoise, white

Support Po

Dimension 12 Ø x10h cm

Code : T09QLS51

Color : white

Care and Maintenance : Clean with a humide or dry cloth



BESPOKE PROJECT

You can select different luminaires and create unique installations by hanging them at different heights.

Designers : John Felici

Material : felt

Available in white and in black

Care and Maintenance : Clean with a dry cloth and vacuum

Interior designer : Joana Aranha

Photographe : Pedro Ferreira



GOOSENECK WALL LAMP

The *Gooseneck Wall Lamp* has an interrupter and an elegant design. To place above the bedside of a large bed for example, this wall lamp will bring warmth and coziness into the room.

Its strength also relies on the adjustable cable length of the pendant.

The support can be sold separately and assembled with any of the *Po! Paris* pendant.

Designer : John Felici

Material : brass and felt wool

Available in black and in gold.

Exists in 3 dimensions :

Small :

l24x53h cm Code : M09QLS210

Medium :

l34x57h cm Code : M09QLS231

Large :

l45x80h cm Code : M09QLS251

Care and Maintenance : Clean with a dry cloth



DOUBLE GOOSENECK WALL LAMP

The *Double Gooseneck Wall Lamp* is the big sister of the *Gooseneck wall lamp*. Perfect to place in your living room above the sofa or a side table. This wall lamp is perfect to bring light and coziness thanks to its movable arm.

Its strength also relies on the adjustable cable length of the pendant.

It has an interrupter or you can also hide the cables in the wall.

The support can be sold separately and assembled with any of the *Po! Paris* pendant.

Designer : John Felici

Material : brass and felt wool

Exist in gold and in black.

Dimensions : l130x100h cm

Code : M09QLS232

Care and Maintenance : Clean with a dry cloth



"THE CRANE" WALL LAMP

Introducing our brand new *Po! Paris* lamp : *The Crane* lamp.

The support comes from a minimal curved line. Made of brass in our parisian atelier, it exists in black and in gold. Sold separately, *The Crane* so you can assemble it with any of the *Po! Paris* pendant or mobile. On the picture the mobile with 5 pendants.

Designer : John Felici

Material : brass

Exist in gold and in black.

Dimensions : l140x110h cm

Code : M09SPR152

Care and Maintenance : Clean with a dry cloth



THE “LIBRA” LAMP

Libra lamp, named after the astrological sign, the Libra is notable for its balance and elegance.

Designer : John Felici

Material : brass, ceramic and felt

Available in black and in gold.

Dimensions : L140 x 34l x 90h cm

Code : M09QLS171

Care and Maintenance : Clean with a dry cloth and vacuum



“LIBRA” LAMP AND “THE CRANE” WALL LAMP

Bespoke light realised with *Libra* lamp and *The Crane* to create a beautiful game of removable balance.

Designer : John Felici

Material : brass, ceramic and felt

Available in black and in gold.

Code : M09QLS171 and M09SPR152

Care and Maintenance : Clean with a dry cloth and vacuum



SMALL «Q.» MOBILE VARIATIONS

Three or four of the smallest size of pendant lamps can be connected as a mobiles :

Dimensions : 75x55 cm

Standard height : 150 cm

4 lamps

Code : M09QLS001

3 lamps

Code : M09QLS002

3 different lamps

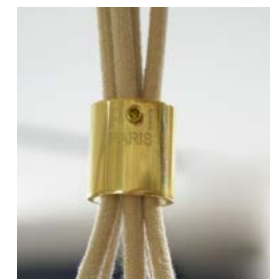
Code : M09QLS003

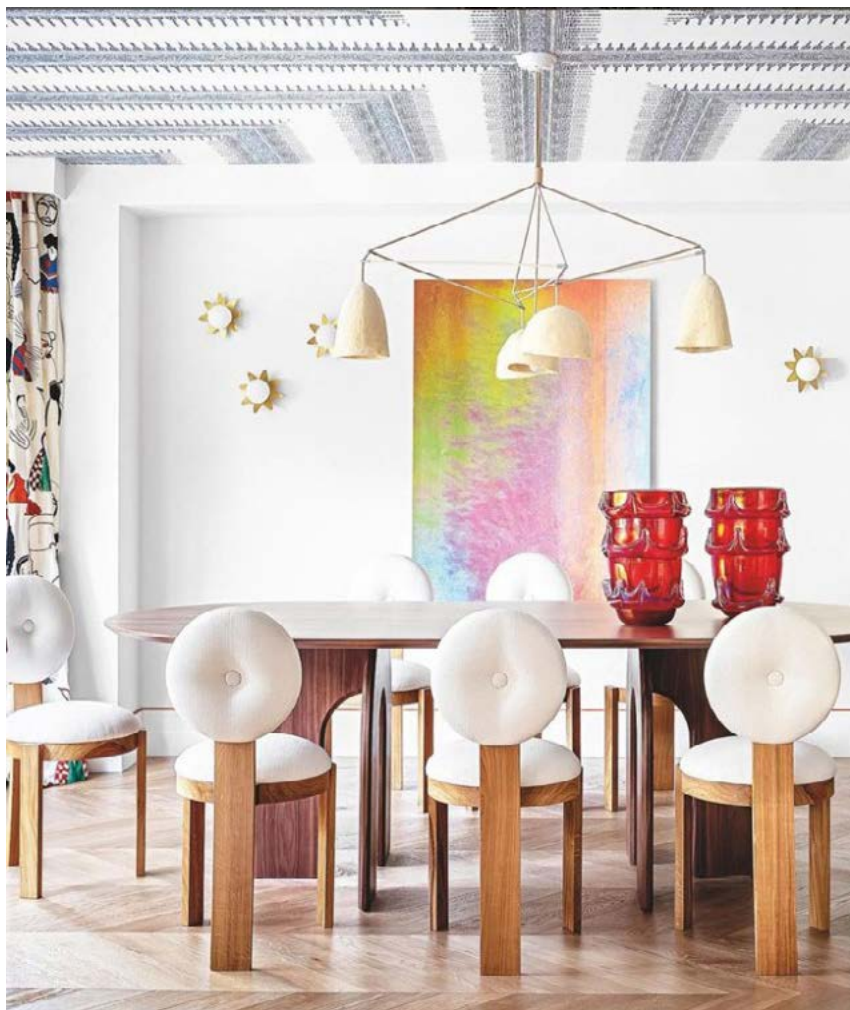
Designers : John Felici and Mark Eden Schooley

Material : wood, felt and metal

Available in black and in natural

Care and Maintenance : Vacuum





Photography : Belen Imaz for Manera Magazine

5 MIX LAMPS «Q.» MOBILE

Bespoke mobiles can also be made with the cables of your choice and this one is one of them. 5 lamps mobile is a new addition to our list as its shape is the perfect middle-ground between a large mobile and a small one.

Designers : John Felici and Mark Eden Schooley
Material : wood, felt and metal

Available in black and in natural

Dimensions : 120x80x150 cm
Code : M09QLS005

Care and Maintenance : Vacuum



7 MIX LAMPS «Q.» MOBILE

This mobile with 7 hanging lights is designed for dining areas. The lampshades are suspended from black cables, mounted on black-painted wooden rods that are height-adjustable and easy to assemble.

Designers : John Felici and Mark Eden Schooley
Material : wood, felt and metal

Available in black and in natural

Dimensions : 155x80x150 cm
Code : M09QLS107

Care and Maintenance : Vacuum



BESPOKE «Q.» MOBILE

Virtually any combination of mobile is possible.

Create your own mobile and we will pre-assemble it.

We can provide an installation service on request.
Enquire within for pricing.

Designers : John Felici and Mark Eden Schooley
Material : wood, felt and metal

Dimensions : variables

Code : M09QLS10X - black or white

Care and Maintenance : Vacuum



LARGE MOBILE «Q.» 9 LAMPS

We developed a mobile with Mark Eden Schooley using 9 "Tirana Q." lamps, all attached to one single cable, simplifying the electrical connection.

The lamps are linked by wooden stem adjustable in height. The stem are detachable to reduce transport costs.

Connexion box in ceramic, hook and connectors provided.

Large Q. mobile

Design : John Felici & Mark Eden-Schooley

Dimensions : 100x100x 150h cm

Reference : M09QLS909 (light)

M09QLS9100 (black)

The bowl in ceramics can be an option. A small supplement may be applied.

A tutorial video will help you set it up : instructions
https://www.youtube.com/watch?v=_FKp_qqafdQ&t=48s



MOBILE «Q.» 9 LAMPS - LONG

The Mobile Q. 9 suspensions is also available in a longer version, in black or natural.

The suspensions are joined by wooden rods of adjustable height allowing a variety of compositions. The rods are detachable for easy transport.

Round textile cable, E27 porcelain socket. Black plug and connectors included.

The standard overall height (including cable) is 150cm, however it is possible to adjust the length of the cable and structure to suit your needs, please advise when ordering.

Designer : John Felici & Mark Eden-Schooley

Dimensions : 160×90 cm

Standard height : 150 cm

Code : M09QLS119

Care and Maintenance : Vacuum



GIANT «Q.» MOBILE 18 LAMPS

The *giant «Q.» mobile* is composed by a mix of 18 lamps. The structure is delivered dismantled for transport. The pieces are numbered to facilitate on site assembly.

Electric wires length on demande.

Designer : John Felici & Mark Eden-Schooley
Material : wood, felt and metal

Available in black and in natural

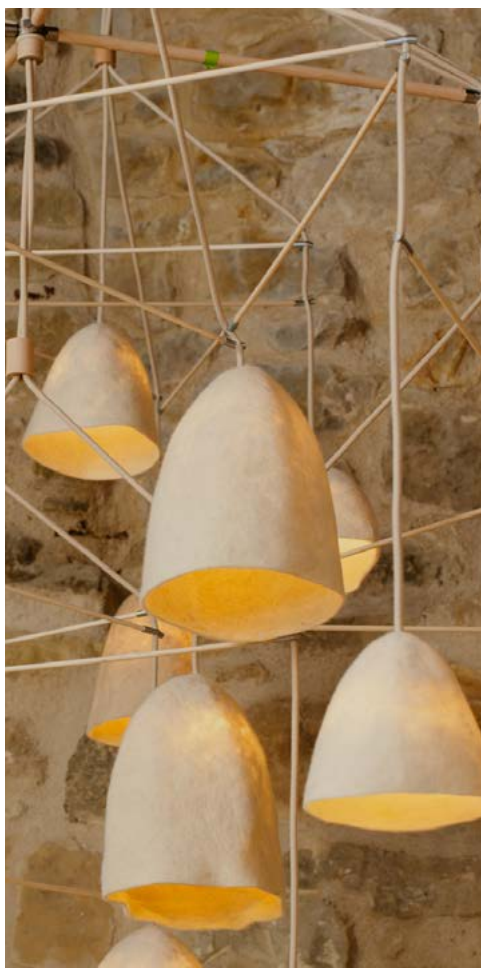
Mobile volume : L170 x D170 x H150cm
Code : M09QLS999

We can provide an installation service on request.

Care and Maintenance : Vacuum



Architecture and design: D I — S diriondostudio
Photography : Pablo Gómez-Ogando



MEGA «Q.» MOBILE

Here, an exemple of a custom mobile of 30 suspensions for a client in Spain.

Designer : John Felici & Mark Eden-Schooley

Material : wood, felt and metal

Available in black and in natural

Code : M09QLS00X

Care and Maintenance : Vacuum



GOOSENECK TABLE LAMP

A table lamp on a ceramic base with brass stem a textile cable and 150cm switch and F type plug.

Designer : John Felici
Material : felt, brass and ceramic

Dimensions : 65x55cm
Code : M09QLS111

Care and Maintenance : Clean with a dry cloth



STONEWARE DESK LAMP

A desk lamp on a ceramic base made with a lathe original black and white paint and brass stem. The textile cable is 150cm long equipped with switch and F type plug.

Designer : John Felici
Material : felt, brass and stoneware

The stoneware is available in black or in white.

Dimensions : 65x55cm
Code : M09QLS110 - white or black

Care and Maintenance : Clean with a dry cloth



«Q.» FLOOR LAMP

More materials merge together for the ideal reading and atmosphere lamp for any room of the home.

The deep Q. lamp is fitted on a long brass tube and a white glazed ceramic base, all hand made in our workshop in Paris.

A wooden and felt base protects the wide ceramic part from shocks.

The lamp is delivered dismantled.

Foot switch, F type plug and 150 cm cable.

Designer : John Felici

Material : felt, brass and ceramic

Dimensions : 150x55cm

Code : M09QLS151

Care and Maintenance : Clean with a dry cloth



Aurélie Mathigot, french Paris based artist, winner of the *Paris Grand Prix* award for creations and craft, elaborates her research performance at the *Mac/Val*, Valenciennes beaux-arts museums, in Geneva or in Rio or at the *Centre national des Arts plastiques*.

She uses yarn to create sculptures in rope, wool, cotton using crochet and other techniques associating various materials and everyday objects and photography. She creates an illusion through textile textures, using objects and images to interfere with reality, creating a new original nature.

Intrigued by her way of treating photography and embroidery, we created a new connection between with Aurélie and a group of highly experienced rug weavers in the North of Albania.



Mark Eden Schooley is an american photographer and designer based in Paris. He specializes in home decor and design magazines such as *Marie Claire Maison*, *Bloom*, *Le monde d'Hermès*, *Elle Déco* and more.

As an independent designer he contributes to the collections of various brands with a distinctive and minimalist style and also has his own brand of lamps, often working with natural materials and metal.

DESIGNERS



Nathalie Lete lives and works in Paris. In her work she combines different techniques and mediums ranging from illustration to ceramics, textile and painting. Constantly on the move, she is inspired by her travels, vintage toys and old engravings of flowers and animals.

Her world is nurtured by popular and folk art of both of her Chinese and German origins.

Her work is colourful, naive and poetic, even strange. It has been said that it close to being "Art brut". She illustrates and produces children's and graphic's books, knitted and stuffed toys, glass pictures, patterned dishes, but also postcards, ceramic sculptures, silkscreen printed t-shirts, rugs and jewels in limited edition... both for herself and for commissions.



John Felici is the founder of *Po! Paris*. His true talent lies in his ability of bringing distant worlds together.

Longtime Parisian resident, he has combined the flair of the capital of fashion and design with that Balkan genius some call madness.

Fond of collaborative design, he develops his creations working closely with the producers, inspired by their environment, culture and personal aspirations.

All his designs are the result of the combination of locally sourced materials, awareness for social and sustainable development issues, with a constant attention to quality standards of high end market products. To achieve his goal he combines his efforts with those of non profit organisations in low income countries.

DESIGNERS

Merci.

