



PO!PARIS
D E S I G N

**WEAVING
&
EMBROIDERY**

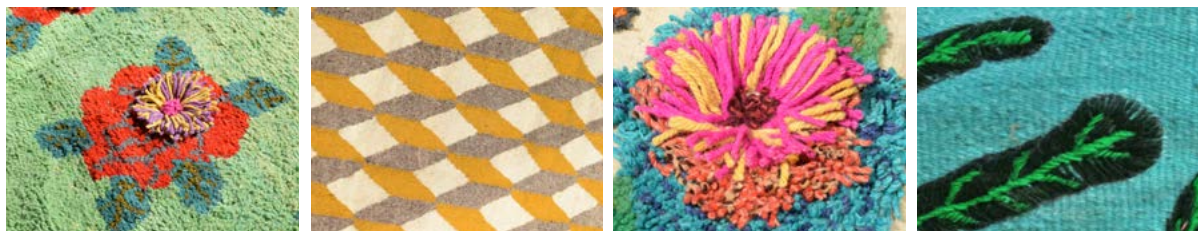
2025 COLLECTION

Rugs, cushion covers,
bags & other accessories

paris@po-paris.com
www.po-paris.com
IG : po.paris.design

TABLE OF CONTENTS

Hand knotted RUG	5
Flat woven Kilim	14
MIXED TECHNIQUE rug	17
BEDHEADS & embroideries.....	28
Cushion COVER	30
TOTE BAGS and baskets	38
COLoRs samples	45
JUTE cushions and bags	49
DESIGNER	



THE LOOM

Weaving has been a lively tradition all over Albania for centuries. Each region has its specific patterns and techniques, geometrical in the south, naive and colourful in the mountainous regions of the North.

In the beginning of the 90's during the democratic transition from the collectivist economy, all the state workshops closed and weaving became a domestic based activity.

Po! Paris is now mobilising this talent by working closely with a local organisation of women and bringing designers from Paris while patiently re-creating the yarn production from the best local wool.

Today three different workshops weave our rugs, each one with its own specific knowhow.

THE TECHNIQUES

The collaboration led to the creation of a new community based workshop where ancestral traditions and very qualified craftsmanship contribute significantly to the revenue for many households, capacity building and training for the new generations.

We use a wide range of techniques, from flat woven to hand knotted, an original mix of both and embroidered on flat woven, as shown in the picture above.

Three to four weavers working side by side weave our large rugs one by one by hand on a vertical loom.



ALL COLOURS

The virgin wool used comes from sheeps from a race called *Ruud*, we chose it because of its rare quality traditionnaly used in Albania. It is then hand tinted in our workshop.

The white and grey nuances of our products are the natural tint of the animals, it is given to you in our sample as references, it might be slightly different depending the natural color of the animal.

The colored wools use the virgin base as well, therefore they might not be perfectly harmonious. We like these differences and believe they add to the unique character of our products.

For the products with patterns like flowers or birds, it is possible to specify to our weavers the colors you would like. Although, we always have trusted their inspiration to pick the right colors and we have never been disappointed.



HAND KNOTTED PILE

In the isolated hamlets of Dukagjin, a mountainous region in the north of Albania, possibly the cradle of Albania's national culture, women have been weaving knotted pile rugs for centuries, bringing warmth and colour to their households during the long and cold winters.

Our rugs are still woven one by one on the same looms.

Two different piles techniques are used : a thick pile made with a twisted yarn, or a pile made with one or more non twisted yarn.

The warp is in cotton, the weft is in wool from local *Ruud* breed sheep, harvested in the beautiful valleys around Mount Korab.

As the workshop produces the yarn and colours, any size and colour combination can be made.



ROSES

Hand-knotted rug produced in Albania in a cooperative workshop managed by women.
thick pile.

Designer : John Felici
Material : Albanian wool

Standard dimensions :
120x150 cm Reference : S02RSE20
150x240 cm Reference : S02RSE01
Other sizes and bespoke :
200x240 cm Reference : S02RSEX

The rug can be made in many different colours that you can chose page 45.

Care and Maintenance : Dry clean or with a stain remover for rugs.





THE MIX RUG BY PHILIPPE MODEL

Hand knotted thick pile.

Because the workshop makes its own yarn, we managed to mix two to three colours per pile. There are up to 40 different colour combinations in this rug designed by Philippe Model for *Po! Paris*.

Designer : Philippe Model

Material : Albanian wool

Standard dimension :

210x180 cm Reference : S02MDL010

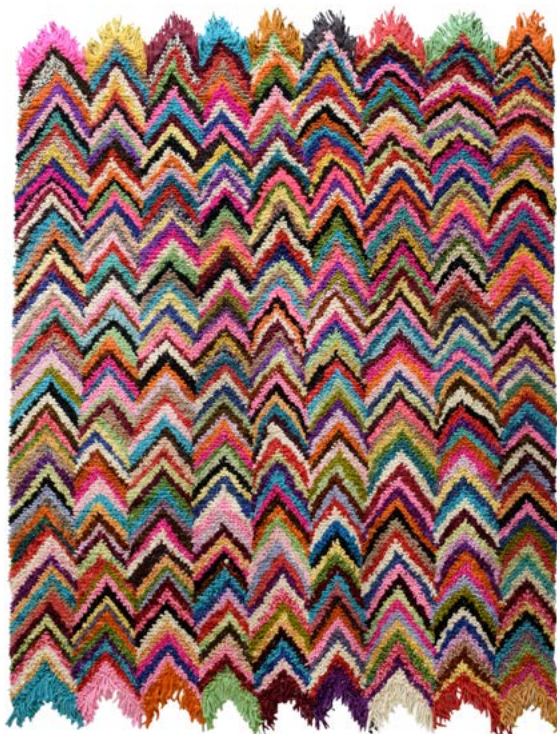
Other sizes and bespoke :

100x50 cm Reference : S02MDL01X

100x100 cm Reference : S02MDL01X

We can make any size. For larger sizes the composition is expanded proportionally, for smaller formats you can either choose a portion of the design or simply reduce the whole pattern to your size requirements.

Care and Maintenance : Dry clean or with a stain remover for rugs.



WILD CHEVRONS

Knotted rug, chevron pattern with 9 tips. Handmade in Albania in a cooperative workshop managed by women.

Designer : Philippe Model

Material : Albanian wool

Standard dimension :

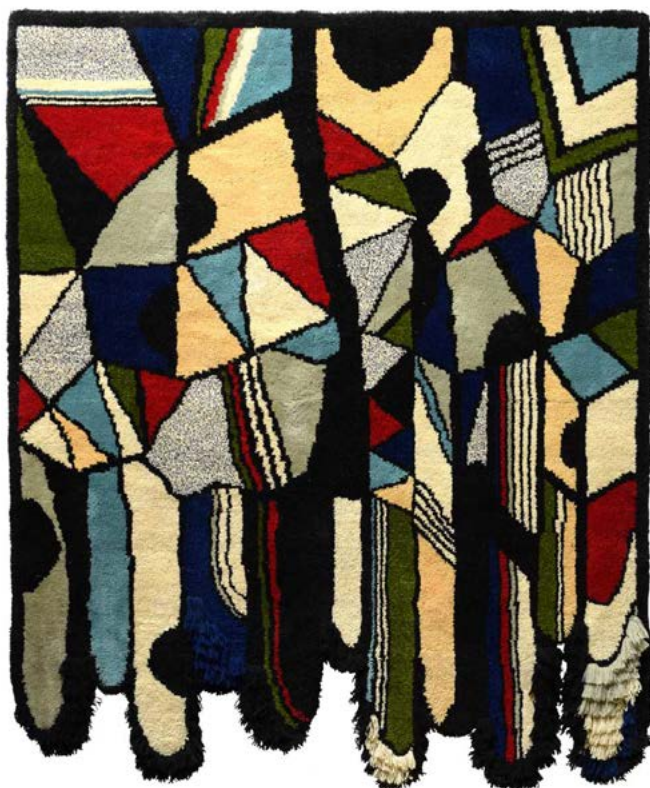
180x120 cm Reference : S02MDL030

Other sizes and bespoke :

220x180 cm Reference : S02MDL03X

This rug can be made to your size requirements or done in two pieces like shown below. Perfect for a bedside rug.





GEOMETRY RUG AND WALL DECORATIONS

Finely knotted rug for use on the floor or also as decoration on the wall. Handmade in Albania in a cooperative workshop managed by women.

Designer : Aurélie Mathigot
Material : Albanian wool

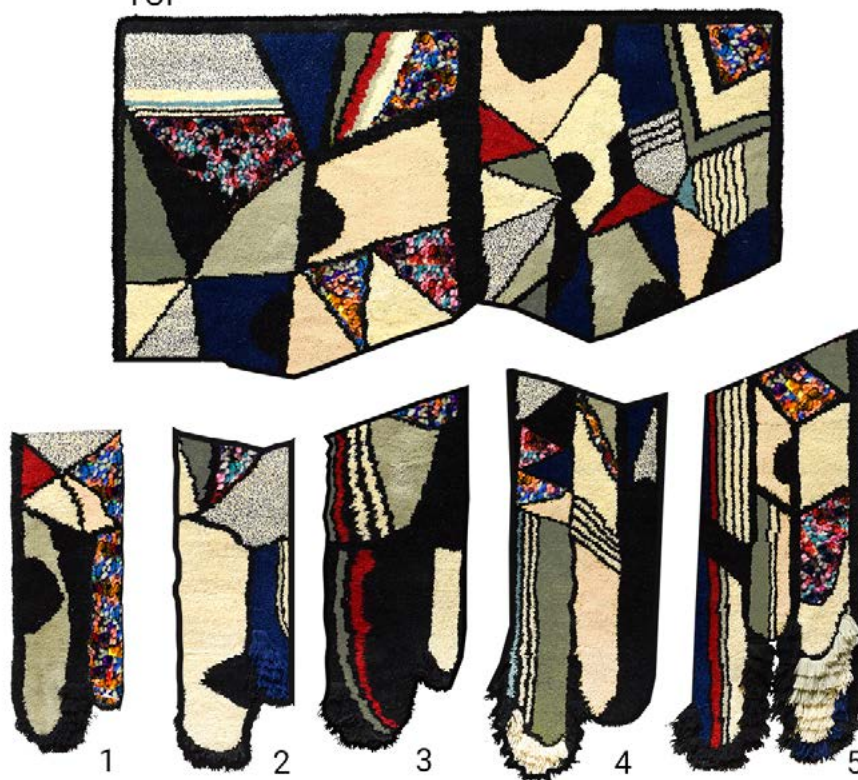
Standard dimensions :
150x180cm Reference : S02ARL01

Smaller sizes of the geometry rugs are suitable as wall decoration.

Other sizes and bespoke :
100x30 cm Reference : S02ARL01X
70x60 cm
100x100 cm

Care and Maintenance : Dry clean or with a stain remover for rugs.

TOP



GEOMETRY RUG PER PIECE

Our geometry rug can also be sold in pieces. To be put all together or to cover your walls separately, you can choose which piece would fit.

Each piece is hand-knotted in a cooperative workshop managed by women in Albania.

Designer : Aurélie Mathigot

Material : Albanian wool

References :

S02ARL01X (top) : 142x65 cm

S02ARL01X (piece 1) : 70x26 cm

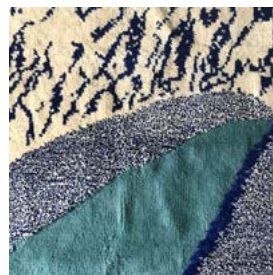
S02ARL01X (piece 2) : 78x27 cm

S02ARL01X (piece 3) : 85x29 cm

S02ARL01X (piece 4) : 91x33 cm

S02ARL01X (piece 5) : 95x35 cm

Care and Maintenance : Dry clean or with a stain remover for rugs.



AURÉLIE'S WAVES

Finely knotted rug for use on the floor or also as decoration on the wall. Handmade in Albania in a cooperative workshop managed by women.

Each section of the composition has a difference in the length of the knotted pile. Very short in the light blue part, thicker in the other parts and very long in between.

Designer : Aurélie Mathigot

Material : Albanian wool

Standard dimensions :

180x210cm Reference : S02ARL02

Alterations in size and colours are possible, either by changing the scale of the design or, if the size should be smaller by choosing one fragment of the larger composition.

Care and Maintenance : Dry clean or with a stain remover for rugs.



AURÉLIE'S THOUGHTS

In itself an anthology of weaving, this rug is hand made, using 10 different weaving techniques on a vertical loom. Handmade in Albania in a cooperative workshop managed by women.

Designer : Aurélie Mathigot

Material : Albanian wool

Standard dimensions :

70x80cm

Reference : S02ARL3X

This rug, also perfect as a wall decoration, can be made to custom sizes and in many colours, either by changing the scale of the design or by choosing one fragment of the larger composition.

Care and Maintenance : Dry clean or with a stain remover for rugs.



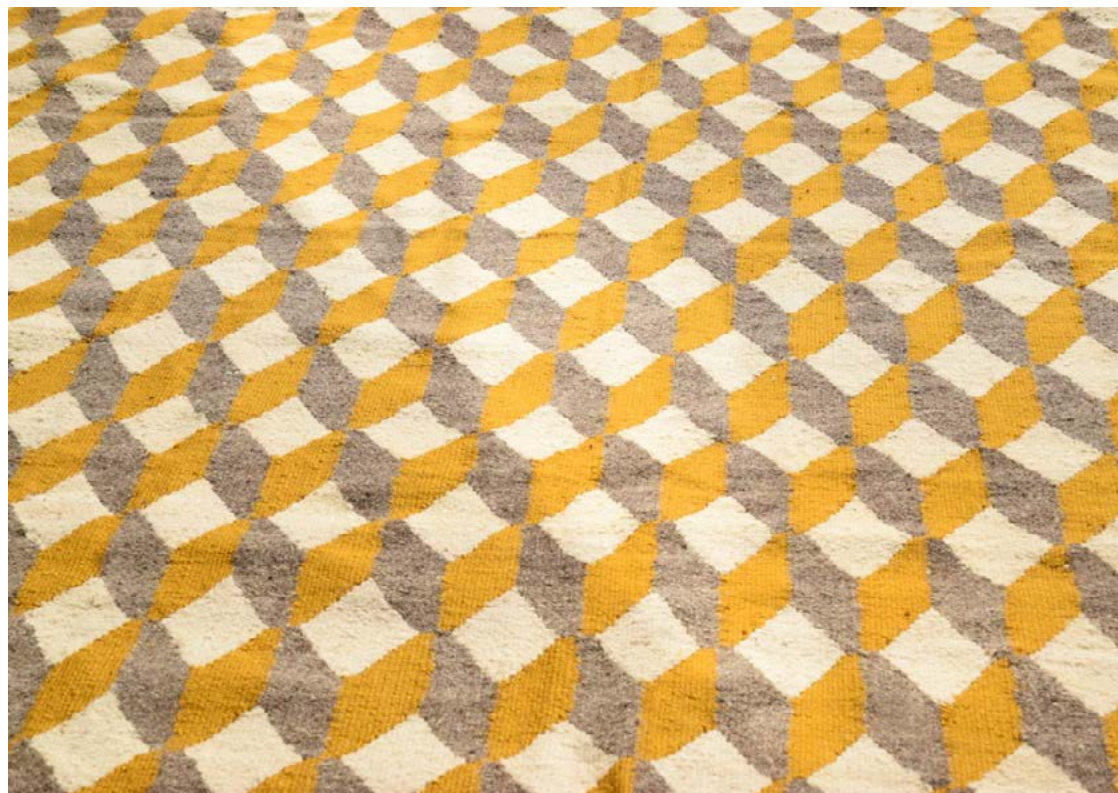
LARGE RUG AURÉLIE'S THOUGHT

On the floor or on the wall as an art piece. *Aurélié's Thought* is hand knotted in a cooperative workshop managed by women in Albania. Aurélié's rug is also available in a larger size.

Designer : Aurélié Mathigot
Material : Albanian wool

Standards dimensions :
143x180 cm Reference : S02ARL03

Care and Maintenance : Dry clean or with a stain remover for rugs.



FLAT WOVEN KELEMS

Traditional Albanian kilim are decorated with characteristic oriental style geometrical patterns, a heritage of the long Ottoman presence in the Balkans.

During the collectivist era weavers were trained in the state run «Fabrikë artisitike» and became the pride of Albania's craft industry.

A few of those weavers are still active today.

This know-how is essential in the making of our new complex designs woven on vertical looms by three to four weavers working side to side.

The yarn is dyed by hand adding exciting vibrations to the patterns.

Our Kilims are woven one by one to your size and colour requirements.

Maximum width is 240 cm but more rugs can be joined with a nearly invisible seam.

We provide simulations of the colour combinations to help visualising the final effect.



KUB RUGS AND CUSHION COVERS

Handwoven rugs and cushion covers produced in an Albanian cooperative workshop managed by women.

Designer : John Felici

Material : Albanian wool

Standards dimensions :

80x80cm

150x240 cm

Other sizes and bespoke :

120x150 cm

200x240cm

Ref. : S02DSK02

Ref. : S02DSK01

Ref. : S02DSKX

Ref. : S02DSKX

Cushion Covers :

Dimensions : 70x70 cm

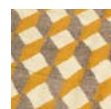
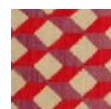
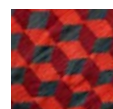
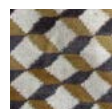
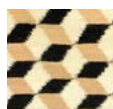
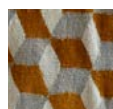
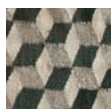
Dimensions : 55x55 cm

Reference : S02DSK12

Reference : S02DSK13

More sizes and colours combinations are available.

Care and Maintenance : Dry clean or with a stain remover for rugs.





ACANTHE

Flat woven two coloured pattern. Handwoven in Albania in a cooperative workshop managed by women.

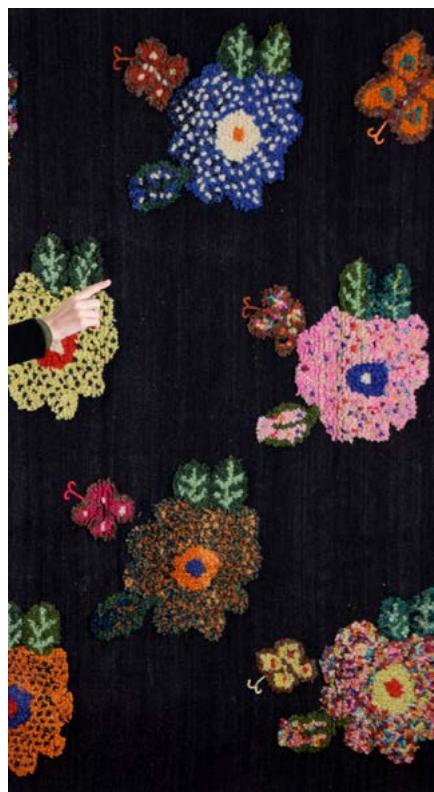
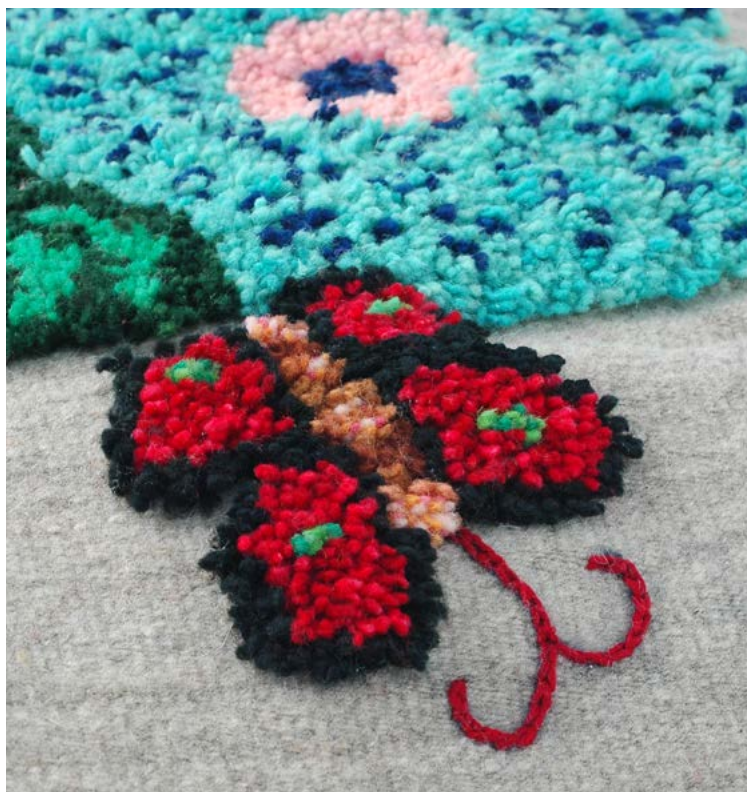
Designer : John Felici
Material : Albanian wool

Standards dimensions :
150x240 cm Reference : S02ACA02

Other sizes and bespoke :
200x240 cm Reference : S02ACA02X

More sizes and colours combinations available.

Care and Maintenance : Dry clean or with a stain remover for rugs.



MIXED TECHNIQUE

Nathalie L  t   is an artist based in Paris known worldwide for her colourful style and rich patterns.

We explored together new techniques to make her designs more visible on woven items.

Working with the weavers we developed an original mix of knotted and straight weaving and embroidery on rugs, baskets and cushions of many colours and sizes.

Each item of this collection is made on a vertical loom with flowers and butterflies embroidered or knotted between lines of flat weaving in a colour and size of your choice.

The choice of the colours combinations and the distribution of the pattern on the background is left to the creativity of the weavers, making each piece absolutely unique.



Moss Rug

The mixed knotted rug is a unique piece that combines two traditional weaving techniques: kilim and symmetrical weaving. This hybrid weaving creates a thick texture and an elegant finish, blending durability with refinement.

Ref.: S02QNR01

Designer: Claire Delloye Quenardel

Composition: Albanian wool

Standard dimensions: 150 × 120 cm

Other sizes and colors are available upon request.

Care: Dry clean or use a carpet stain remover





Amitiés rug

Nathalie Lété's First Rug Featuring a Character

The mixed knotted rug is a unique piece that combines two traditional weaving techniques: kilim and symmetrical weaving.

Ref.: S02-NTL671

Designer: Nathalie Lété

Composition: Albanian wool

Standard dimensions: 150 × 170 cm

Other sizes and colors are available upon request.

Care: Dry clean or use a carpet stain remover.



NATHALIE'S BUTTERFLIES

Hand knotted and handwoven rug produced in a cooperative workshop in Albania.

Designer : Nathalie Lété

Material : Albanian wool

Each rug is absolutely unique.

Standard dimensions :

150x120 cm Reference : S02NTL20

Other sizes and bespoke :

200x240 cm Reference : S02NTL20X

70x70 cm

More sizes and colours page 45 combinations can be made.

Care and Maintenance : Dry clean or with a stain remover for rugs.



NATHALIE'S SMALL FLOWERS

Hand knotted and handwoven rug produced in a cooperative workshop in Albania.

Designer : Nathalie Lété

Material : Albanian wool

Dimensions :

200x240 cm Reference : S02NTL22

Bespoke colours page 45 and sizes can be made to order. The weavers create the colors of the flowers, unless otherwise requested, but they are arranged in an aleatory way.

Each item is totally unique as none will be the same.

Care and Maintenance : Dry clean or with a stain remover for rugs.





NATHALIE'S BIRDS RUG

Hand knotted and handwoven rug produced in a cooperative workshop in Albania.

Designer : Nathalie Lété

Material : Albanian wool

Dimensions :

180x210 cm Reference : S02NTL55

Bespoke colours and sizes can be made to order.

The weavers will adapt the composition to the new format if needed.

Each item is totally unique as none will be the same.

Care and Maintenance : Dry clean or with a stain remover for rugs.



NATHALIE'S OWL RUG

Nathalie's owl is a colorful addition to our bird collection. Mostly knotted with some woven and embroidered bits, this rug would be a beautiful feature for children's room. The main colour can be picked and the rest will be on our weavers' talent.

Designer : Nathalie Lété

Material : Albanian wool

Dimensions : 142x65 cm

Reference : S02NTL56

Bespoke colours and sizes can be made to order.

The weavers will adapt the composition to the new format if needed.

Each item is totally unique as none will be the same.

Care and Maintenance : Dry clean or with a stain remover for rugs.



NATHALIE'S SEA RUG

Hand knotted and handwoven rug produced in a cooperative workshop in Albania.

Designer : Nathalie Lété

Material : Albanian wool

Standards dimensions :

180x220 cm Reference : S02NTL60

Bespoke colours page 45 and sizes can be made to order.

The weavers will adapt the composition to the new format if needed.

Each item is totally unique as none will be the same.

Care and Maintenance : Dry clean or with a stain remover for rugs.



NATHALIE'S SEA CREATURES RUGS

Those beautiful sea creatures are mostly knotted with some partial woven parts - mostly here to put together the rug's shape.

Designer : Nathalie Lété

Material : Albanian wool

Carp

Dimensions : 72x150 cm Reference : S02NTL61

Tigerfish

Dimensions : 150x150 cm Reference : S02NTL61

Seahorse

Dimensions : 50x150 cm Reference : S02NTL61

Bespoke colours and sizes can be made to order.

The weavers will adapt the composition to the new format if needed.

Each item is totally unique as none will be the same.

Care and Maintenance : Dry clean or with a stain remover for rugs.



NATHALIE'S ANIMALS RUG

Those beautiful animals are mostly knotted with some partial woven parts - mostly here to put together the rug's shape.

Designer : Nathalie Lété

Material : Albanian wool

Squirrel

Dimensions : 80x88 cm Reference : S02NTL56

Cat

Dimensions : 140x140 cm Reference : S02NTL56

Bespoke colours and sizes can be made to order.

The weavers will adapt the composition to the new format if needed.

Each item is totally unique as none will be the same.

Care and Maintenance : Dry clean or with a stain remover for rugs.



NATHALIE'S CHARACTERS RUG

Those beautiful characters are mostly knotted with some partial woven parts - mostly here to put together the rug's shape.

Designer : Nathalie Lété
Material : Albanian wool

Teddy Bear

Dimensions : 75x113 cm Reference : S02NTL57

Birdman

Dimensions : 45x113 cm Reference : S02NTL57

Elephant

Dimensions : 75x113 cm Reference : S02NTL57

Bespoke sizes can be made to order, the weavers will adapt the composition to the new format if needed.

Each item is totally unique as none will be the same.

Care and Maintenance : Dry clean or with a stain remover for rugs.



NATHALIE'S CHARACTERS RUG

New Collection : Kitty, Spike and the Rabbit

Designer : Nathalie Lété

Material : Albanian wool

Kitty

Dimensions : 45x113 cm Reference : S02NTL57

Spike

Dimensions : 45x113 cm Reference : S02NTL57

Rabbit

Dimensions : 45x113 cm Reference : S02NTL57

Bespoke sizes can be made to order, the weavers will adapt the composition to the new format if needed.

Each item is totally unique as none will be the same.

Care and Maintenance : Dry clean or with a stain remover for rugs.



POSTER - THE HAPPY GARDENER

«Le Jardinier Heureux» appears at the same time as the publication of Nathalie's summer book «La semaine du Jardinier Heureux» in September 2023. It is printed on cotton and hand-embroidered in Albania.

Designer: Nathalie Lété
Composition : Cotton, wool and wood

The Happy Gardener
Dimensions : 50x70 cm Ref : S01NTL01



WEAVING AND EMBROIDERY

Embroidery is a common activity amongst women in Albania.

Their natural sense for colour is perfectly in tune with Nathalie Lété's style.

We brought these two extraordinary talents together and developed a range of cushions and baskets embroidered by hand on a thick flat woven base using bright colours.

The pieces are woven and assembled in the workshop, while the embroidery is mostly done at home by women of the same area, adding income to a growing number of households of this town in the north of the country.



BEDHEADS

Small, medium and large bedheads. The bird theme is woven and knotted on a flat woven base.

It can be placed on the wall bed head using the small eyelets behind the pompons. Each piece is totally unique.

If used as a rug, the embroidered parts of the rug are more fragile than the rest, it is recommended not to place it in highly frequented areas to minimise the risk of potential damage.

Designer : Nathalie Lété

Material : Albanian wool

Dimensions :

Small : 100x70 cm

Reference : S02NTL05

Medium : 140x70 cm

Reference : S02NTL15

Large : 160x70 cm

Reference : S02NTL25

Care and Maintenance : Dry clean or with a stain remover for rugs.



CUSHION COVER



NATHALIE'S FLOWERS CUSHION COVER

Our iconic Nathalie Lété cushions ! Colorful and flowery, they will give a springly feeling to any interior.

The weavers freely choose the best combination of coloured yarn for the pattern, making each and every piece absolutely unique.

Designer : Nathalie Lété
Material : Albanian wool

You can choose the background color from a large range of colours page 45.

Dimensions :
Large (two flowers) : 70x70 cm Ref. : S02NTL110

Small (one flower) : 55x55 cm Ref. : S02NTL120

Care and Maintenance : Dry clean or with a stain remover for rugs.



NATHALIE'S SMALL FLOWERS CUSHION

Introducing Nathalie's Small Flowers cushion that joined the cushion collection in 2022. Available in small and large size.

Handwoven and hand-knotted in a cooperative workshop managed by women in Albania.

You can choose the background color from a large range of colours page 45.

Each piece is totally unique as none will be the same.

Designer : Nathalie Lété

Material : Albanian wool

Dimensions :

Large : 70x70 cm

Small : 55x55 cm

Reference : S02NTL117

Reference : S02NTL127

Care and Maintenance : Dry clean or with a stain remover for rugs.



BUTTERFLY CUSHION COVER

Large and smaller cushion covers with a hand-knotted pattern on a flat woven background. Each piece is absolutely unique and handmade in Albania.

Designer : Nathalie Lété

Material : Albanian wool

Dimensions :

Small : 50x50 cm

Large : 70x70 cm

Reference : S02NTL202

Reference : S02NTL201

Please specify the colours you'd like in your order.

Care and Maintenance : Dry clean or with a stain remover for rugs.



NATHALIE'S BIRD CUSHION COVER

Nathalie Lété's birds cushion covers joined the flowery ones in our 2020 collection to bring a soft and springly feeling to your space.

The background colours are to chose page 45. The weavers freely choose the best combination of coloured yarn for the pattern, making each and every piece absolutely unique.

Designer : Nathalie Lété
Material : Albanian wool

Dimensions :
Large : 70x70 cm
Small : 55x55 cm

Reference : S02NTL115
Reference : S02NTL125

Care and Maintenance : Dry clean or with a stain remover for rugs.



NATHALIE'S UNDERGROWTH

This pattern is unique representation of Nathalie Lété's imagination.

With the forest, these piece will bring Nathalie's dreams to your home.

Each piece is totally unique and hand-knotted in Albania.

Designer : Nathalie Lété

Material : Albanian wool

Dimensions :

65x90 cm

Reference : S02NTL210

The background color can be changed. The samples are page 45.

Care and Maintenance : Dry clean or with a stain remover for rugs.



NATHALIE'S HAPPY GARDENER CUSHION

The Happy Gardener cushions are inspired by the book «Le Jardinier Heureux» by Nathalie Lété.

Woven and knotted by hand in Albania in a cooperative workshop run by women. Each piece is absolutely unique.

Designer: Nathalie Lété
Composition : Albanian wool

Dimensions :
65x90 cm Reference: S02NTL242

Choice of background color. All color samples can be seen on page 45.

Care: Dry-clean or use a carpet stain remover.



WILD CHEVRONS CUSHION COVER

Large cushion cover, hand-knotted chevron pattern and flat handwoven background. Each piece is totally unique and handmade in a cooperative workshop in Albania.

Designer : Philippe Model

Material : Albanian wool

Standard dimensions :

70x90 cm Reference : S02MDL13

Fits a 70x70 cm cushion

Care and Maintenance : Dry clean or with a stain remover for rugs.



CABAS ET PANIERS





NATHALIE'S TOTE BAGS

Bags with a woven back that can be made from each of Nathalie Lété's collection : Flower, Small flowers, Bird, Fish, Seahorse, Lobster.

The pattern is knotted on one side of the bag.
Each totebag is absolutely unique and handmade in a cooperative workshop in Albania.

Designer : Nathalie Lété

Material : Albanian wool

Dimensions :
40x25x35h cm

Reference : S02NTL446

The background color can be changed. The samples are page 45.

Care and Maintenance : Dry clean or with a stain remover for rugs.



NATHALIE'S TOTE BAGS

Handwoven in Albania in a women-led cooperative workshop.

The creatures featured in these designs are from Nathalie Lété's collections: Fish, Bird, Small Flowers, Flower and Butterfly, Seahorse, and Lobster. The motif is knotted on one side of the bag. Each piece is entirely unique.

Designer: Nathalie Lété
Composition: Albanian wool

Dimensions: 40 × 25 × 35 cm
References: S02NTL438-067-02 / S02NTL438-053-02
/ S02NTL438-058-02 / S02NTL438-049_02

Care: Dry clean or use a carpet stain remover.



NATHALIE'S MIDDLE SIZE

Nathalie's totebag is ideal for a picnic, an afternoon at the beach or to go to the market.

Their unique patterns are on one side of the bags. Each piece is unique and handmade in Albania.

Different patterns are available : Flower, Small flowers, Bird, Fish, Seahorse and Lobster.

You can pick the colour of the background page 45.

Designer : Nathalie Lété

Material : Albanian wool

Dimensions:
50x30x38 CM

Reference : S02NTL438

Care and Maintenance : Dry clean or with a stain remover for rugs.



NATHALIE'S TOTE BAGS

Little bags with a woven back that can be made from each of Nathalie Lété's collection : Flower, Small flowers, Bird, Fish, Seahorse, Lobster.

The pattern is knotted on one side of the bag. Each totebag is absolutely unique and handmade in a cooperative workshop in Albania.

Designer : Nathalie Lété

Material : Albanian wool

Dimensions :
40x25x35h cm

Reference : S02NTL446

The background color can be changed. The samples are page 45.

Care and Maintenance : Dry clean or with a stain remover for rugs.



NATHALIE'S TOTE BAGS

Little bags with a woven back that can be made from each of Nathalie Lété's collection : Flower, Small flowers, Bird, Fish, Seahorse, Lobster.

The pattern is knotted on one side of the bag.

Each totebag is absolutely unique and handmade in a cooperative workshop in Albania.

Designer : Nathalie Lété

Material : Albanian wool

Dimensions :

40x25x35h cm

Reference : S02NTL446

The background color can be changed. The samples are page 45.

Care and Maintenance : Dry clean or with a stain remover for rugs.





NATHALIE'S TOTE BAGS HIGH SIZE

Nathalie's totebag high size is perfect for a walk or to go to work.

Their unique patterns are on one side of the bags.

We usually trust our weavers talent to pick the colour of the pattern which makes each piece unique. The background color is to be chosen page 45.

Everything is handmade in a cooperative workshop in Albania.

Different patterns are available : Flower, Small flowers, Bird, Fish, Seahorse and Lobster.

Designer : Nathalie Lété

Material : Albanian wool

Dimensions :
40x25x50h cm

Reference : S02NTL437

Care and Maintenance : Dry clean or with a stain remover for rugs.

NATHALIE'S TOTE BAGS HIGH SIZE

Nathalie Characters tall tote bag is perfect for a day's outing or work. It can hold a computer, pockets and a water bottle.

Nathalie's characters are featured on one side only. The designs are hand-knotted in Albania in a cooperative workshop run by women. Each bag is absolutely unique.

The characters represented are : The Birdman, The Rabbit and Kitty.

We usually trust our weavers talent to pick the colour of the pattern which makes each piece unique. The background color is to be choosed page 45.

Designer : Nathalie Lété
Material : Albanian wool

Dimensions :
40x25x50h cm

Reference : S02NTL457

Care and Maintenance : Dry clean or with a stain remover for rugs.



NATHALIE'S MEDIUM BASKETS

Nathalie's baskets middle size is used for decoration or as hand bag.

Different patterns are available : Flower, Small flowers, Bird, Fish, Seahorse and Lobster.

Their unique patterns are on both sides of the bags. Hand knotted in Albania in a cooperative workshop managed by women. You can chose the background color page 45. Each piece is absolutely unique.

Designer : Nathalie Lété

Material : Albanian wool

Dimensions :
40x30x50 cm

Reference : S02NTL436

Care and Maintenance : Dry clean or with a stain remover for rugs.





NATHALIE'S LARGE BASKETS

Nathalie's large basket is most commonly used for storage and decoration.

Each basket is hand-knotted in a cooperative workshop managed by women in Albania.

Their unique patterns are on both sides of the bags.

You can pick the colour of the background page 45, we usually trust our weavers talent to pick the colour of the pattern which makes each piece unique.

Designer : Nathalie Lété

Material : Albanian wool

Dimensions : 50x35x60h cm

Small flowers	Ref. : S02NTL427
The sea	Ref. : S02NTL426
Birds	Ref. : S02NTL425
The Flower	Ref. : S02NTL422

Care and Maintenance : Dry clean or with a stain remover for rugs.



JUTE

In Tirana you can have virtually anything embroidered typically for special occasions such as weddings or engagements.

The women practice their skills on jute from coffee sacks. We decided to leave the up cycled fibre apparent as background of original designs by *Po! Paris* or Nathalie Lété and Sarah Wilkins.

The original prints of the brand of coffee beans can occasionally be visible.

The collection ranges from simple tote bags in two sizes, to cushion covers.

With time a group of women has become a small cooperative with help from our local partner in Albania creating a real business providing additional income to households in Albania.



Martin Luther King



Rosa Parks



Nelson Mandela



Michael Jackson



Adam & Eve



Amy Winehouse



Ruth Bader Ginsburg



Nelson Mandela & Desmond Tutu



Gandhi



Marilyn Monroe



Woody Allen



Lady Diana

HEROES ON JUTE CUSHION COVERS

Albanian people usually chat and discuss politics and world affairs, and very often about celebrities. Here is a selection we made.

The back of the cushion covers are in cotton. Colours may vary according to availability.

Designer : John Felici

Material : Upcycled coffee sacks

Size :

40x40 cm

Reference : S04(NAME)01

Care and Maintenance : Dry clean



Butterfly



Butterfly



Hippy



Pour toi



Grandma



Grandma



Pink skull



Yellow skull



Acanthe red



Peasley



Peasley

THE OTHER PATTERNS

Any pattern can be applied on the bags or the cushion covers.

Designer : John Felici

Material : Upcycled coffee sacks

Dimensions : 40x40 cm

Reference : S04(NAME)01

Inner cushion sold separately.

Care and Maintenance : Dry clean

JUTE BAGS

All patterns can also be made as Jute bags. Here is an overview of all our bags in embroidered upcycled Jute. The bags are lined.

Small bag : 24x32 cm

Reference : S05(NAME)01

Large bag : 35x43 cm

Reference : S05(NAME)02

Designers (per line) : Nathalie Lété

John Felici

Sarah Wilkins

Material : Upcycled coffee sacks

Care and Maintenance : Dry clean



Teddy Bear



Mr Bird



Rabbit



Butterfly



Eiffel Tower



Pour toi



Freud



M. Jackson



Hippy



Mata Hari



Skull



Cherry



Umbrella



Cake



Zoti Po!



Moka



Flash



Splash



Nathalie Lete lives and works in Paris. In her work she combines different techniques and mediums ranging from illustration to ceramics, textile and painting.

Constantly on the move, she is inspired by her travels, vintage toys and old engravings of flowers and animals.

Her world is nurtured by popular and folk art of both of her Chinese and German origins.

Her work is colourful, naive and poetic, even strange. It has been said that it is close to being "Art brut".

She illustrates and produces children's and graphic books, knitted and stuffed toys, glass pictures, patterned dishes, but also postcards, ceramic sculptures, silkscreen printed t-shirts, rugs and jewels in limited edition... both for herself and for commissions.



Sarah Wilkins is a New Zealand born illustrator who lives between Paris and Wellington.

She spends her time creating illustrations with a unique combination of sharp-eyed visual wit, sophisticated colours and graceful hand-lettering.

Working with acrylic, gouache, pen & ink, Sarah's whimsical and elegant style has a refreshingly painterly feel. Her illustrations have been featured around the world in magazines and advertising campaigns, airports, museums, bookstores, on buses, murals, in the metro, as well as on bags, cups, books, toys...the list goes on.

Sarah's clients include *Barnes & Noble*, *American Express*, *UNESCO*, *Smithsonian*, *Time Magazine*, *The New York Times*...

DESIGNERS



Decorator, stylist, scenographer, costume designer, museographer, Philippe Model transforms space in an enchanted territory.

He has gained fame worldwide creating shoes, hats and gloves and accessories for brands such as *Dior*, *Hermes*, *Lanvin*, *Jean-Paul Gautier*, *Kenzo*, *Yves Saint-Laurent* and *Thierry Mugler* -amongst others, until he decided to move on his own way.

His luxurious apartment in an "Hôtel Particulier" in the center of Paris became his own playground for his experiments with colours and textures in every corner.

Philippe Model likes to say colour is one of the great pleasures of life. The very particular taste and sensibility for colour of our Albanian weavers seduced Philippe who instantly designed a collection of rugs and accessories for *Po! Paris*.

DESIGNERS



Aurélie Mathigot, French Paris based artist, winner of the *Paris Grand Prix* award for creations and craft, elaborates her research performance at the Mac/Val, Valenciennes beaux-arts museums, in Geneva or in Rio or at the Centre National des Arts plastiques.

She uses yarn to create sculptures in rope, wool, cotton using crochet and other techniques associating various materials and everyday objects and photography.

She creates an illusion though textile textures, using objects and images to interfere with reality creating a new original nature.

Intrigued by her way of treating photography and embroidery we created a new connection between with Aurélie and a group of highly experienced rug weavers in the North of Albania.



Mark Eden Schooley is an american photographer and designer based in Paris.

He specializes in home decor and design magazines such as *Marie Claire Maison*, *Bloom*, *Le monde d'Hermès*, *Elle Déco* and more.

As an independent designer he contributes to the collections of various brands with a distinctive and minimalist style and also has his own brand of lamps, often working with natural materials and metal.



John Felici is the founder of *Po! Paris*. His true talent lies in his ability of bringing distant worlds together.

Longtime Parisian resident, he has combined the flair of the capital of fashion and design with that Balkan genius some call madness.

Fond of collaborative design, he develops his creations working closely with the producers, inspired by their environment, culture and personal aspirations.

All his designs are the result of the combination of locally sourced materials, awareness for social and sustainable development issues, with a constant attention to quality standards of high end market products. To achieve his goal he combines his efforts with those of non-profit organisations in low income countries.

DESIGNERS

Merci.